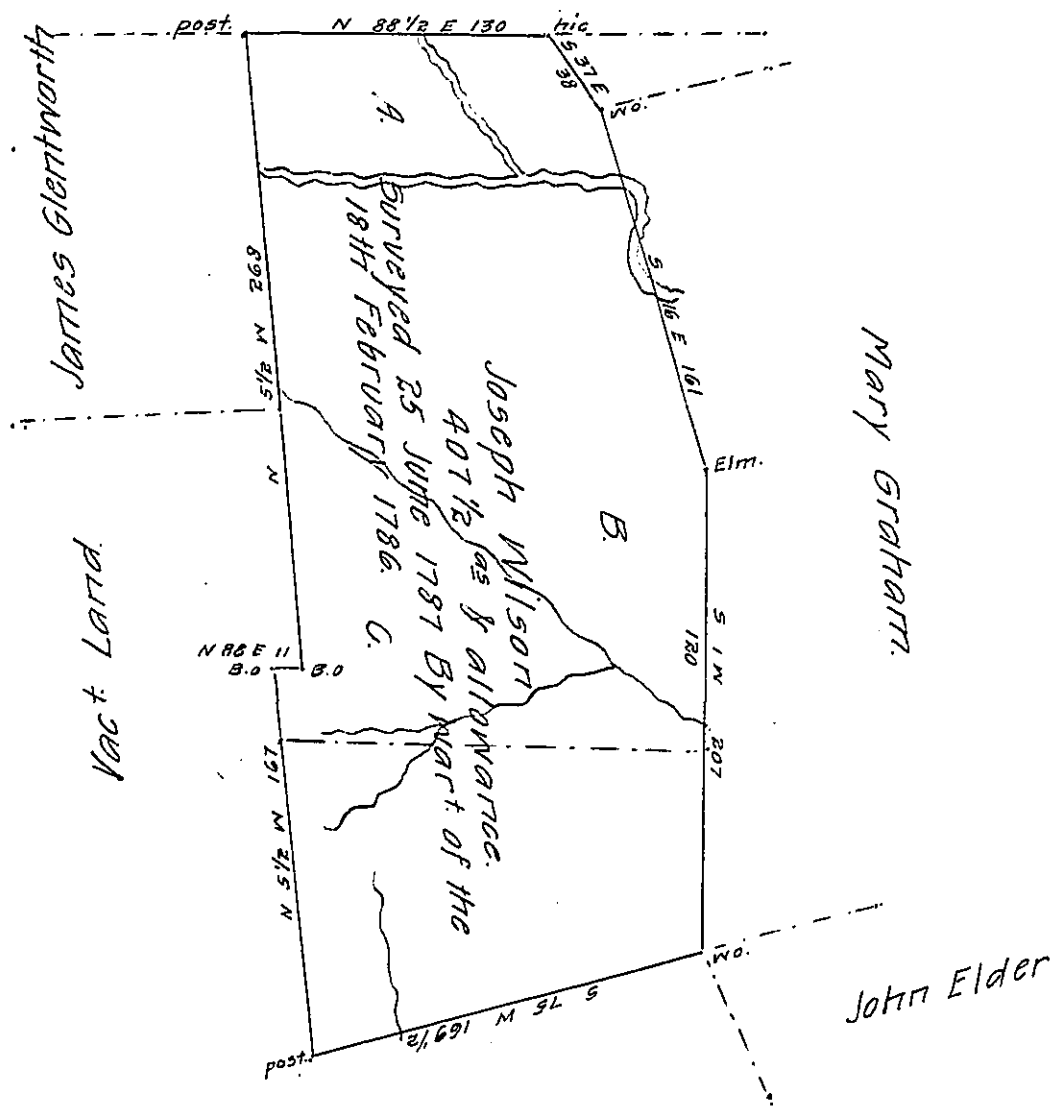


George Glentworth



The dotted line and the letters A B C in the above diagram represent the survey made to Samuel Meredith on the 11<sup>th</sup> day of March 1828 a return whereof is herewith enclosed. It will be seen that the land has been previously surveyed and appropriated at the time stated in the above diagram. It is owned and occupied by Robert Wilson who claims under the title to Joseph Wilson. I could not find that any person claimed under the title to Samuel Meredith.

John Taylor D.S.

IN TESTIMONY that the above is a copy of the original remaining on file in the Department of Internal Affairs of Pennsylvania, made conformably to an Act of Assembly approved the 16th day of February, 1833, I have hereunto set my Hand and caused the Seal of said Department to be affixed at Harrisburg, this twenty-ninth day of October 1908.

*Henry Howell*  
Secretary of Internal Affairs.